

INDEX MAP

VULCAN MATERIALS COMPANY CAJON CREEK CONSOLIDATED QUARRY CA MINE ID # 91-36-0188 MINING / RECLAMATION PLAN

PROPOSED USE:	EXISTING, PERMITTED AGGREGATE MINE, AGGREGATE PROCESSING FACILITIES, AND HOT MIX ASPHALT PLANT
MINERAL COMMODITY:	SAND AND GRAVEL
APPLICANT / OPERATOR:	VULCAN MATERIALS COMPANY - WESTERN DIVISION 31 RANCHO CAMINO DRIVE, SUITE 300 POMONA, CALIFORNIA 91766 (818) 553-4800
PLAN DESIGN:	SESPE CONSULTING, INC. 374 POLI STREET, SUITE 200 VENTURA, CALIFORNIA 93001 (805) 275-1515
LEAD AGENCY:	COUNTY OF SAN BERNARDINO LAND USE SERVICES DEPARTMENT 385 N. ARROWHEAD ROAD SAN BERNARDINO, CALIFORNIA 93001 (909) 387-4002
LAND USE ZONING:	SEE SHEET 2
BASE MAP SOURCES:	SEE TOPOGRAPHY SOURCES (RIGHT)

SHEET INDEX

FIGURE 1: SITE OVERVIEW - EXISTING CONDITIONS
FIGURE 2: PROPERTY INFORMATION
FIGURE 3: MINING PLAN
FIGURE 4: RECLAMATION PLAN
FIGURE 5: SECTION A-A'
FIGURE 6: SECTION B-B'
FIGURE 7: SITE PLAN

DATA SOURCES

PROPERTY BOUNDARIES:

ALTA SURVEY PREPARED APRIL 2006 BY DAWSON SURVEYING, INC.
ALTA SURVEY PREPARED JUNE 2008 BY GORDON EDWARDS, PLS #6678 FOR THE LOT LINE ADJUSTMENT FOR FOR APN 0262-241-26.
SURVEY DATA PREPARED SEPTEMBER 2019 BY JOSEPH PADILLA, PLS #7557 FOR THE LOT LINE ADJUSTMENT OF APN: 0262-221-17.

TOPOGRAPHY:

TOPOGRAPHY WITHIN AREAS K, L, M, AND N SOURCED FROM DIGITAL MAPPING, INC. (DENNIS HERBERT DILLMAN, PLS 5426), FLOWN 05/12/2014.
TOPOGRAPHY OUTSIDE AREAS K, L, M, AND N SOURCED FROM DIGITAL MAPPING, INC., FLOWN 8/30/2005.

DATUM: HORZ= NAD83, CALIFORNIA ZONE 5, US FOOT
VERT= NAVD88

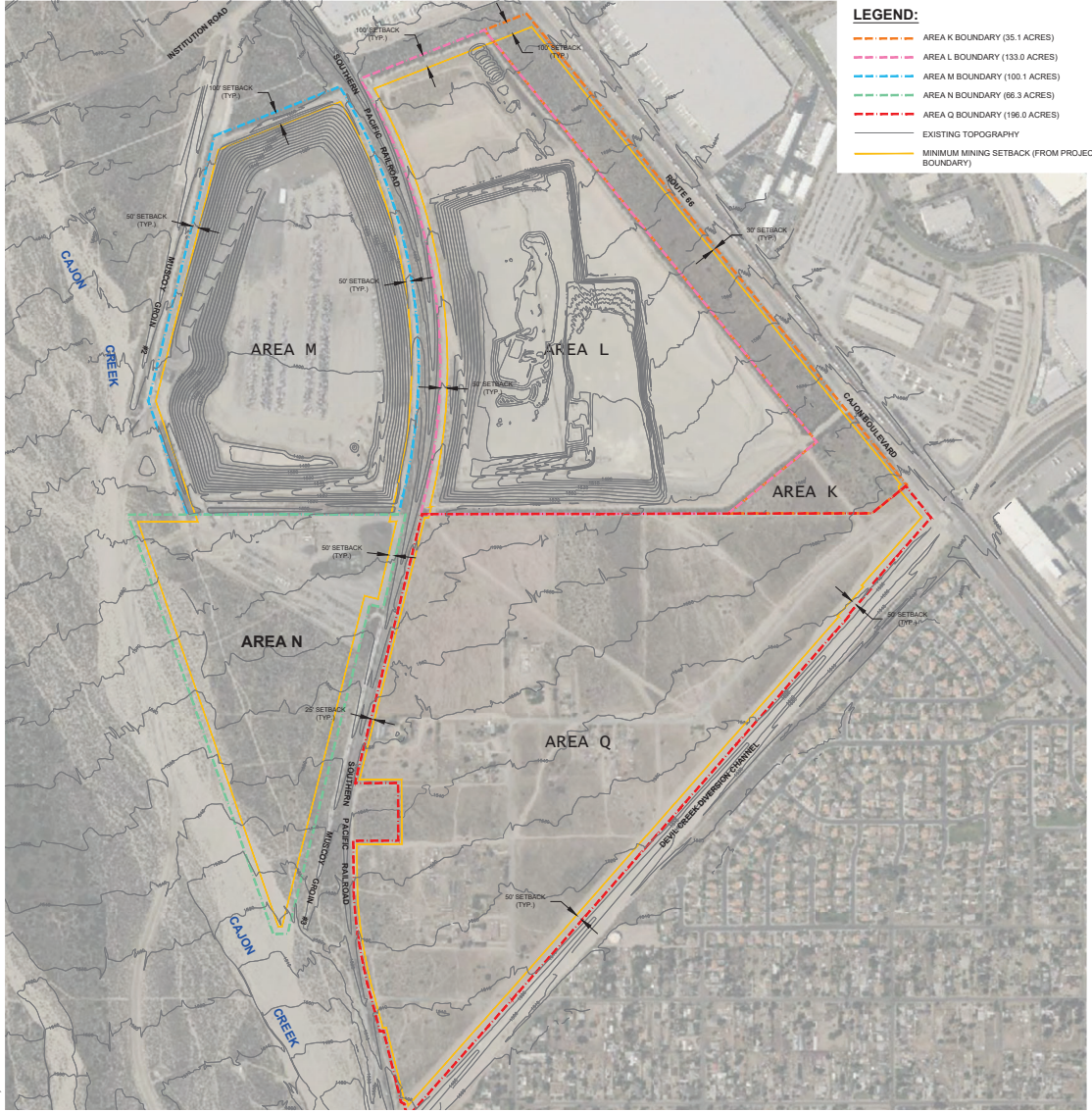
CONTOUR INTERVAL: 10 FEET

AERIAL:

BING IMAGERY, 2022

PROJECT SITE INFORMATION

EASEMENT:	PUBLIC UTILITIES EASEMENTS TO BE VACATED PRIOR TO MINING WITHIN THESE AREAS
MINERAL BEING EXTRACTED:	SAND AND GRAVEL
ADJACENT AREA:	SEE SHEET 3
PROJECT AREA:	SEE SHEET 3
PROTECTED PLANTS:	NONE
GROUNDWATER LEVEL:	+260 FEET BELOW GROUND SURFACE (SEE SHEET 5 AND 6)
EXISTING LAND USE DESIGNATION:	SEE TABLE SHEET 2
PROPOSED LAND USE DESIGNATION:	SEE TABLE SHEET 2
ELECTRICITY:	SOUTHERN CALIFORNIA EDISON (SCE) P.O. BOX 800 ROSEMEAD, CA 91770 (800) 655-4555
GAS:	N/A (NO NATURAL GAS AND/OR PROPANE SERVICE REQUIRED)
WATER:	EXISTING WATER WELL LOCATED WITHIN AREA M
SEWER:	EXISTING PORTABLE SANITATION FACILITIES LOCATED WITHIN AREA L
TELEPHONE:	N/A (NO FIXED LANDLINE TELEPHONE SERVICE REQUIRED)



LEGEND:

- AREA K BOUNDARY (35.1 ACRES)
- AREA L BOUNDARY (133.0 ACRES)
- AREA M BOUNDARY (100.1 ACRES)
- AREA N BOUNDARY (66.3 ACRES)
- AREA Q BOUNDARY (198.0 ACRES)
- EXISTING TOPOGRAPHY
- MINIMUM MINING SETBACK (FROM PROJECT BOUNDARY)

SURROUNDING LAND USES

DIRECTION	LAND USE DESIGNATION	DESCRIPTION
NORTH	UNDEVELOPED LAND & INDUSTRIAL DEVELOPMENT	UNDEVELOPED LAND / A LARGE INDUSTRIAL WAREHOUSE OCCURS NORTH OF THE PROJECT SITE AND LIGHT INDUSTRIAL DEVELOPMENT TO THE NORTHEAST.
SOUTH	MUSCOY / SINGLE RESIDENTIAL - 1-ACRE MINIMUM (MSRS-1)	THE DEVIL CREEK DIVERSION CHANNEL RUNS DOWN THE SOUTHERN BOUNDARY OF THE SITE, AND THE RESIDENTIAL COMMUNITY OF MUSCOY IS LOCATED DIRECTLY SOUTH OF THIS DIVERSION CHANNEL.
EAST	INDUSTRIAL HEAVY (IH)	INDUSTRIAL DEVELOPMENTS ARE LOCATED EAST OF THE SITE, ACROSS CAJON BOULEVARD.
WEST	UNDEVELOPED LAND	THE LYTLE CREEK/CAJON CREEK DRAINAGE LOCATED TO THE WEST.

DATUM: HORZ= NAD83, CALIFORNIA ZONE 5, US FOOT
VERT= NAVD88

Vulcan
Materials Company

SESPE
CONSULTING, INC.
A Trinity Consultants Company
374 Poli Street, Suite 200 • Ventura, CA 93001
(805) 275-1515 • www.sespeconsulting.com

OWNER / APPLICANT	
VULCAN MATERIALS COMPANY - WESTERN DIVISION 31 RANCHO CAMINO DRIVE, SUITE 300 POMONA, CALIFORNIA 91766	
LAND USE CONSULTANT	
SESPE CONSULTING, INC. 374 POLI STREET, SUITE 200 VENTURA, CALIFORNIA 93001 (805) 275-1515	

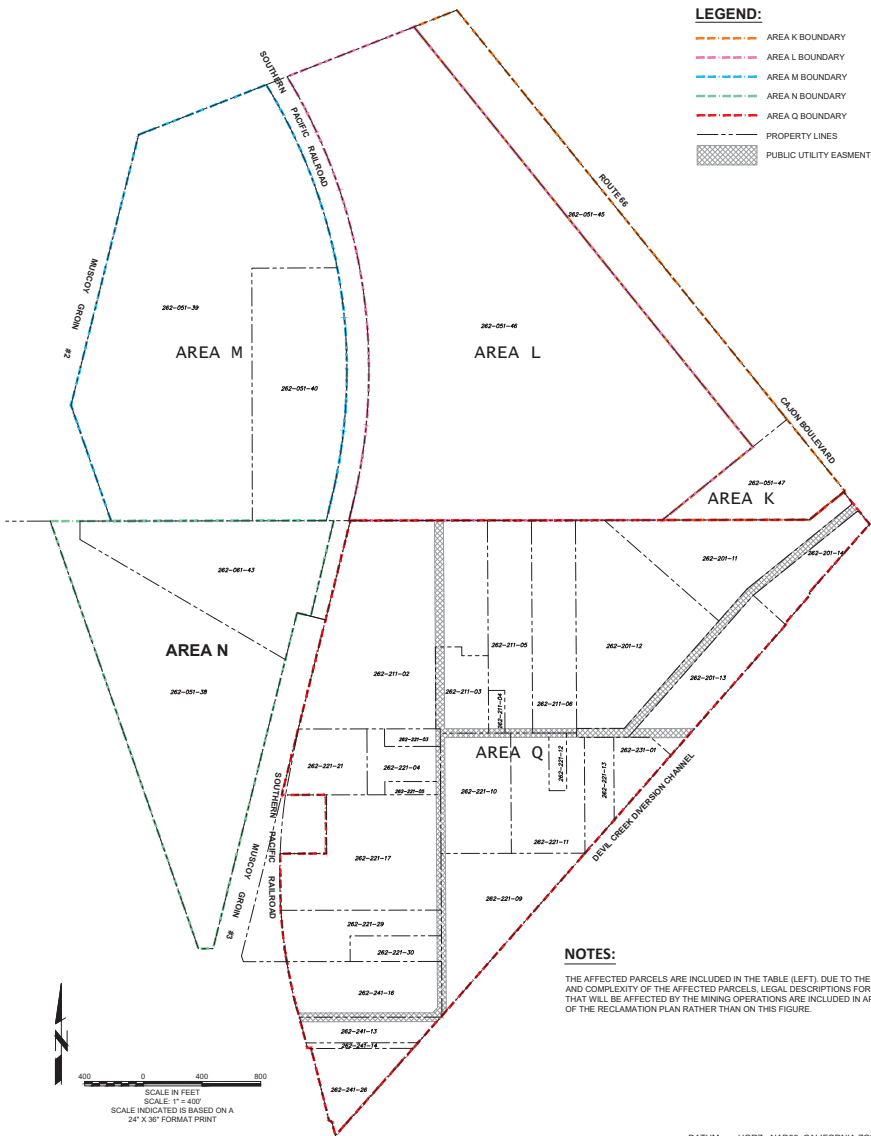
REVISIONS			
NO.	DATE	DESCRIPTION	BY

VULCAN MATERIALS COMPANY CAJON CREEK CONSOLIDATED QUARRY	
SITE OVERVIEW - EXISTING CONDITIONS	
FIGURE NUMBER	1



PARCEL NUMBER	AREA (ACRES)	PROPERTY OWNER	LAND USE DESIGNATION	CURRENT MINIMUM RIGHTS INTEREST HOLDER
AREA-Q	0252-2011-14.00	12.45 VULCAN LANDS, INC. 1200 URBAN CENTER DRIVE BIRMINGHAM, ALABAMA 35242	GENERAL INDUSTRIAL (C) COMMUNITY INDUSTRIAL (C)	VULCAN LANDS, INC. P.O. BOX 30524 BIRMINGHAM, AL 35242-0514
AREA-Q	0252-2011-20.00	20.15 VULCAN LANDS, INC. 1200 URBAN CENTER DRIVE BIRMINGHAM, ALABAMA 35242	GENERAL INDUSTRIAL (C) COMMUNITY INDUSTRIAL (C)	VULCAN LANDS, INC. P.O. BOX 30524 BIRMINGHAM, AL 35242-0514
AREA-Q	0252-2011-82.01	82.1 VULCAN LANDS, INC. 1200 URBAN CENTER DRIVE BIRMINGHAM, ALABAMA 35242	GENERAL INDUSTRIAL (C) COMMUNITY INDUSTRIAL (C)	VULCAN LANDS, INC. P.O. BOX 30524 BIRMINGHAM, AL 35242-0514
AREA-Q	0252-2011-44.00	4.16 VULCAN LANDS, INC. 1200 URBAN CENTER DRIVE BIRMINGHAM, ALABAMA 35242	GENERAL INDUSTRIAL (C) COMMUNITY INDUSTRIAL (C)	VULCAN LANDS, INC. P.O. BOX 30524 BIRMINGHAM, AL 35242-0514
AREA-Q	0252-21-02.00	32.80 VULCAN LANDS, INC. 1200 URBAN CENTER DRIVE BIRMINGHAM, ALABAMA 35242	GENERAL INDUSTRIAL (C) COMMUNITY INDUSTRIAL (C)	VULCAN LANDS, INC. P.O. BOX 30524 BIRMINGHAM, AL 35242-0514
AREA-Q	0252-21-09.00	4.00 CALMAT CO. 131 RANDOL CANYON DRIVE, SUITE 300 POMONA, CALIFORNIA 92766	GENERAL INDUSTRIAL (C) COMMUNITY INDUSTRIAL (C)	CALMAT CO. P.O. BOX 30524 BIRMINGHAM, AL 35242-0514
AREA-Q	0252-21-04.00	0.75 CALMAT CO. 131 RANDOL CANYON DRIVE, SUITE 300 POMONA, CALIFORNIA 92766	GENERAL INDUSTRIAL (C) COMMUNITY INDUSTRIAL (C)	VULCAN LANDS, INC. P.O. BOX 30524 BIRMINGHAM, AL 35242-0514
AREA-Q	0252-21-05.00	9.28 CALMAT CO. 131 RANDOL CANYON DRIVE, SUITE 300 POMONA, CALIFORNIA 92766	GENERAL INDUSTRIAL (C) COMMUNITY INDUSTRIAL (C)	CALMAT CO. P.O. BOX 30524 BIRMINGHAM, AL 35242-0514
AREA-Q	0252-21-06.00	10.00 ARUNDEL COMPANY, LLC 1200 URBAN CENTER DRIVE BIRMINGHAM, ALABAMA 35242	GENERAL INDUSTRIAL (C) COMMUNITY INDUSTRIAL (C)	ARUNDEL COMPANY, LLC P.O. BOX 30524 BIRMINGHAM, AL 35242-0514
AREA-Q	0252-22-03.00	1.05 VULCAN LANDS, INC. 1200 URBAN CENTER DRIVE BIRMINGHAM, ALABAMA 35242	GENERAL INDUSTRIAL (C) COMMUNITY INDUSTRIAL (C)	VULCAN LANDS, INC. P.O. BOX 30524 BIRMINGHAM, AL 35242-0514
AREA-Q	0252-21-04.00	3.30 VULCAN LANDS, INC. 1200 URBAN CENTER DRIVE BIRMINGHAM, ALABAMA 35242	GENERAL INDUSTRIAL (C) COMMUNITY INDUSTRIAL (C)	VULCAN LANDS, INC. P.O. BOX 30524 BIRMINGHAM, AL 35242-0514
AREA-Q	0252-22-05.00	0.79 VULCAN LANDS, INC. 1200 URBAN CENTER DRIVE BIRMINGHAM, ALABAMA 35242	GENERAL INDUSTRIAL (C) COMMUNITY INDUSTRIAL (C)	VULCAN LANDS, INC. P.O. BOX 30524 BIRMINGHAM, AL 35242-0514
AREA-Q	0252-22-09.00	12.50 VULCAN LANDS, INC. 1200 URBAN CENTER DRIVE BIRMINGHAM, ALABAMA 35242	GENERAL INDUSTRIAL (C) COMMUNITY INDUSTRIAL (C)	VULCAN LANDS, INC. P.O. BOX 30524 BIRMINGHAM, AL 35242-0514
AREA-Q	0252-21-10.00	0.04 VULCAN LANDS, INC. 1200 URBAN CENTER DRIVE BIRMINGHAM, ALABAMA 35242	GENERAL INDUSTRIAL (C) COMMUNITY INDUSTRIAL (C)	VULCAN LANDS, INC. P.O. BOX 30524 BIRMINGHAM, AL 35242-0514
AREA-Q	0252-21-10.00	8.40 VULCAN LANDS, INC. 1200 URBAN CENTER DRIVE BIRMINGHAM, ALABAMA 35242	GENERAL INDUSTRIAL (C) COMMUNITY INDUSTRIAL (C)	VULCAN LANDS, INC. P.O. BOX 30524 BIRMINGHAM, AL 35242-0514
AREA-Q	0252-21-12.00	1.10 VULCAN LANDS, INC. 1200 URBAN CENTER DRIVE BIRMINGHAM, ALABAMA 35242	GENERAL INDUSTRIAL (C) COMMUNITY INDUSTRIAL (C)	VULCAN LANDS, INC. P.O. BOX 30524 BIRMINGHAM, AL 35242-0514
AREA-Q	0252-21-23.00	3.11 VULCAN LANDS, INC. 1200 URBAN CENTER DRIVE BIRMINGHAM, ALABAMA 35242	GENERAL INDUSTRIAL (C) COMMUNITY INDUSTRIAL (C)	VULCAN LANDS, INC. P.O. BOX 30524 BIRMINGHAM, AL 35242-0514
AREA-Q	0252-22-17.00	16.89 VULCAN LANDS, INC. 1200 URBAN CENTER DRIVE BIRMINGHAM, ALABAMA 35242	GENERAL INDUSTRIAL (C) COMMUNITY INDUSTRIAL (C)	VULCAN LANDS, INC. P.O. BOX 30524 BIRMINGHAM, AL 35242-0514
AREA-Q	0252-22-11.00	5.32 VULCAN LANDS, INC. 1200 URBAN CENTER DRIVE BIRMINGHAM, ALABAMA 35242	GENERAL INDUSTRIAL (C) COMMUNITY INDUSTRIAL (C)	VULCAN LANDS, INC. P.O. BOX 30524 BIRMINGHAM, AL 35242-0514
AREA-Q	0252-21-29.00	6.03 VULCAN LANDS, INC. 1200 URBAN CENTER DRIVE BIRMINGHAM, ALABAMA 35242	GENERAL INDUSTRIAL (C) COMMUNITY INDUSTRIAL (C)	VULCAN LANDS, INC. P.O. BOX 30524 BIRMINGHAM, AL 35242-0514
AREA-Q	0252-22-30.00	2.38 VULCAN LANDS, INC. 1200 URBAN CENTER DRIVE BIRMINGHAM, ALABAMA 35242	GENERAL INDUSTRIAL (C) COMMUNITY INDUSTRIAL (C)	VULCAN LANDS, INC. P.O. BOX 30524 BIRMINGHAM, AL 35242-0514

PLANNING AREA	PARCEL NUMBER	AREA (ACRES)	PROPERTY OWNER	LAND USE DESIGNATION	CURRENT MINIMUM RIGHTS INTEREST HOLDER
AREA Q	0262-231-05-000	2.90	VULCAN LANDS, INC. 1200 URBAN CENTER DRIVE BIRMINGHAM, ALABAMA 35242	GENERAL INDUSTRIAL (G) COMMUNITY INDUSTRIAL (C)	VULCAN LANDS, INC. P.O. BOX 380354 BIRMINGHAM, AL 35242-5014
AREA Q	0262-241-03-0000	3.96	VULCAN LANDS, INC. 1200 URBAN CENTER DRIVE BIRMINGHAM, ALABAMA 35242	GENERAL INDUSTRIAL (G) COMMUNITY INDUSTRIAL (C)	VULCAN LANDS, INC. P.O. BOX 380354 BIRMINGHAM, AL 35242-5014
AREA Q	0262-241-04-000	0.00	VULCAN LANDS, INC. 1200 URBAN CENTER DRIVE BIRMINGHAM, ALABAMA 35242	GENERAL INDUSTRIAL (G) COMMUNITY INDUSTRIAL (C)	VULCAN LANDS, INC. P.O. BOX 380354 BIRMINGHAM, AL 35242-5014
AREA Q	0262-241-06-000	8.74	VULCAN LANDS, INC. 1200 URBAN CENTER DRIVE BIRMINGHAM, ALABAMA 35242	GENERAL INDUSTRIAL (G) COMMUNITY INDUSTRIAL (C)	VULCAN LANDS, INC. P.O. BOX 380354 BIRMINGHAM, AL 35242-5014
AREA Q	0262-241-26-000	4.85	VULCAN LANDS, INC. 1200 URBAN CENTER DRIVE BIRMINGHAM, ALABAMA 35242	GENERAL INDUSTRIAL (G) COMMUNITY INDUSTRIAL (C)	VULCAN LANDS, INC. P.O. BOX 380354 BIRMINGHAM, AL 35242-5014
AREA N	0262-051-8-0000	117.68	CALMAT CO. 31 RANCHO CAMINO DRIVE, SUITE 300 POMONA, CALIFORNIA 91766	INDUSTRIAL EXTRACTIVE (IE) CALMAT/CADIZ OREK SPECIFIC PLAN (P) 90-150	CALMAT CO. P.O. BOX 380354 BIRMINGHAM, AL 35242-5014
AREA M	0262-051-9-0000	77.38	CALMAT CO. 31 RANCHO CAMINO DRIVE, SUITE 300 POMONA, CALIFORNIA 91766	INDUSTRIAL EXTRACTIVE (IE) CALMAT/CADIZ OREK SPECIFIC PLAN (P) 90-150	CALMAT CO. P.O. BOX 380354 BIRMINGHAM, AL 35242-5014
AREA M	0262-051-0-0000	27.72	CALMAT CO. 31 RANCHO CAMINO DRIVE, SUITE 300 POMONA, CALIFORNIA 91766	INDUSTRIAL EXTRACTIVE (IE) CALMAT/CADIZ OREK SPECIFIC PLAN (P) 90-150	CALMAT CO. P.O. BOX 380354 BIRMINGHAM, AL 35242-5014
AREA K	0262-051-0-0000	24.79	CALMAT CO. 31 RANCHO CAMINO DRIVE, SUITE 300 POMONA, CALIFORNIA 91766	INDUSTRIAL EXTRACTIVE (IE) CALMAT/CADIZ OREK SPECIFIC PLAN (P) 90-150	CALMAT CO. P.O. BOX 380354 BIRMINGHAM, AL 35242-5014
AREA L	0262-051-48-000	123.35	CALMAT CO. 31 RANCHO CAMINO DRIVE, SUITE 300 POMONA, CALIFORNIA 91766	INDUSTRIAL EXTRACTIVE (IE) CALMAT/CADIZ OREK SPECIFIC PLAN (P) 90-150	CALMAT CO. P.O. BOX 380354 BIRMINGHAM, AL 35242-5014
AREA K	0262-051-47-000	11.28	CALMAT CO. 31 RANCHO CAMINO DRIVE, SUITE 300 POMONA, CALIFORNIA 91766	INDUSTRIAL EXTRACTIVE (IE) CALMAT/CADIZ OREK SPECIFIC PLAN (P) 90-150	CALMAT CO. P.O. BOX 380354 BIRMINGHAM, AL 35242-5014
AREA N	0262-061-03-000	21.23	CALMAT CO. 31 RANCHO CAMINO DRIVE, SUITE 300 POMONA, CALIFORNIA 91766	INDUSTRIAL EXTRACTIVE (IE) CALMAT/CADIZ OREK SPECIFIC PLAN (P) 90-150	CALMAT CO. P.O. BOX 380354 BIRMINGHAM, AL 35242-5014



NOTES:

THE AFFECTED PARCELS ARE INCLUDED IN THE TABLE (LEFT). DUE TO THE NUMBER AND COMPLEXITY OF THE AFFECTED PARCELS, LEGAL DESCRIPTIONS FOR LANDS THAT WILL BE AFFECTED BY THE MINING OPERATIONS ARE INCLUDED IN APPENDIX E OF THE RECLAMATION PLAN RATHER THAN ON THIS FIGURE.

DATUM: HORZ= NAD83, CALIFORNIA ZONE 5, US FOOT
 VERT= NAVD88
SOURCES: SEE SHEET 1

OWNER / APPLICANT
VULCAN MATERIALS COMPANY -
WESTERN DIVISION
31 RANCHO CAMINO DRIVE, SUITE 300
POMONA, CALIFORNIA 91766

REVISIONS			
REAR	DATE	DESCRIPTION	BY
	08/10/02	INITIAL DRAFT	G.C.

VULCAN MATERIALS COMPANY
CAJON CREEK CONSOLIDATED
QUARRY

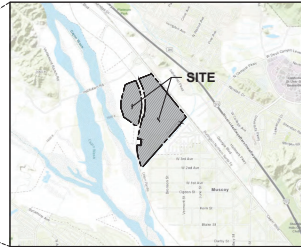
LAND USE CONSULTANT
RESPE CONSULTING, INC.
374 POLI STREET, SUITE 200
VENTURA, CALIFORNIA 93001
(805) 275-1515

PROPERTY INFORMATION			
REVISIONS BY:	SCALE	HORIZ	AS SHOWN
		NORTH	AS SHOWN
		DRAWN BY: G. CAMER	
		CHECKED BY: BGA / APS	

FIGURE NUMBER
2



INDEX MAP



GEOLOGIC DESCRIPTION:

THE GEOLOGIC DESCRIPTION IS BASED ON THE FOLLOWING TECHNICAL REPORTS AND HAS NOT BEEN VERIFIED IN THE FIELD BY THE UNDERSIGNED:

- DANSKIN, W., MCPHERSON, K., & WOOLFENDEN, L. (2006). *HYDROLOGY, DESCRIPTION OF COMPUTER MODELS, AND EVALUATION OF SELECTED WATER-MANAGEMENT ALTERNATIVES IN THE SAN BERNARDINO AREA, CALIFORNIA*. U.S. GEOLOGICAL SURVEY.
- DUTCHER, L. & GARRETT, A. (1963). *GEOLOGIC AND HYDROLOGIC FEATURES OF THE SAN BERNARDINO AREA, CALIFORNIA*. WASHINGTON, D.C.: U.S. GOVERNMENT PRINTING OFFICE.
- HALEY & ALDRICH, INC. (APRIL 2020). *ADDENDUM TO GEOTECHNICAL EVALUATION REPORT*. WALNUT CREEK, CA: HALEY & ALDRICH, INC.
- MILLER, F. & MATTI, J. (2001). *GEOLOGIC MAP OF THE SAN BERNARDINO NORTH 7.5 QUADRANGLE, SAN BERNARDINO COUNTY, CALIFORNIA*. OPEN-FILE REPORT 01-131. MENLO PARK, CA: SAN BERNARDINO, U.S. GEOLOGICAL SURVEY. RETRIEVED FROM [HTTPS://PUBS.USGS.GOV/OF/2001/0131/](https://pubs.usgs.gov/of/2001/0131/).

GEOLOGIC SETTING

THE SITE IS LOCATED WITHIN THE PENINSULAR RANGES PHYSIOGRAPHIC PROVINCE, WHICH CONSISTS OF A SERIES OF MOUNTAINS RANGES DOMINATED BY MESOZOIC GRANITIC AND OLDER METAMORPHIC ROCKS SEPARATED BY VALLEY BASINS FORMED BY SAN ANDREAS-RELATED FAULTS AND OTHER FAULT SEGMENTS. THE SITE IS SITUATED WITHIN THE SAN BERNARDINO BASIN, AN ALLUVIAL LOWLAND FILLED WITH SEDIMENT DERIVED FROM SURROUNDING HIGHLANDS THAT IS BOUND BY THE SAN ANDREAS FAULT ZONE TO THE NORTH AND THE SAN JACINTO FAULT TO THE SOUTHWEST. THE SAN BERNARDINO BASIN REPRESENTS A PULL-APART BASIN THAT FORMED IN RESPONSE TO A RIGHT STEP DISPLACEMENT BETWEEN THE SAN JACINTO AND SAN ANDREAS FAULTS (HALEY & ALDRICH, 2020).

REGIONAL GEOLOGY

THE SITE IS SITUATED SOUTH OF THE EASTERN EXTENT OF THE SAN GABRIEL MOUNTAINS, A PROMINENT PHYSIOGRAPHIC FEATURE ALONG THE NORTHERN EDGE OF THE LOS ANGELES METROPOLITAN AREA AND PORTIONS OF THE INLAND EMPIRE. THE REGIONAL GEOLOGY CONSISTS OF SEDIMENTARY BASIN INFILL CHARACTERIZED AS UNCONSOLIDATED RIVER-CHANNEL DEPOSITS AND HOLOCENE AND PLEISTOCENE ALLUVIUM (DANSKIN, ET AL., 2006). THE EASTERN REGION IS CHARACTERIZED BY YOUNGER ALLUVIUM AND QUATERNARY AND TERTIARY INDOURATED SEDIMENTARY STRATA OUTCROPPING ALONG LOW-RELIEF HILLSIDES. A BASEMENT COMPLEX OF PRECAMBRIAN TO TERTIARY IGNEOUS AND METAMORPHIC ROCKS THAT UNDERLIES THE BASIN INFILL CROPS OUT IN THE SURROUNDING MOUNTAIN RANGES (DUTCHER & GARRETT, 1963). REGIONALLY, THE AREA IS CONSIDERED SEISMICALLY ACTIVE, WITH MANY FAULTS DESIGNATED AS BEING IN ALQUIST-PROLO (AP) SPECIAL STUDY ZONES. THE REGIONAL STRUCTURAL GEOLOGY IS CHARACTERIZED BY THE CUCAMONGA THRUST FAULT AND THE SAN ANDREAS FAULT, WHICH BOUND THE SAN GABRIEL MOUNTAINS TO THE SOUTH AND NORTHEAST, RESPECTIVELY. THE SAN JACINTO FAULT TRENDS BETWEEN THE CUCAMONGA THRUST FAULT AND THE SAN ANDREAS FAULT THROUGH LITTLE AND GLEN HELEN WASHES AND CANYONS.

SITE GEOLOGY

THE GEOLOGY OF THE SITE IS CHARACTERIZED AS BRAIDED, ALLUVIAL LITHOFACIES THAT FORM WITHIN MEDIAL TO DISTAL FAN COMPLEXES. BASED ON THE USGS GEOLOGIC MAP OF THE SAN BERNARDINO NORTH 7.5-MINUTE QUADRANGLE, SAN BERNARDINO COUNTY, CALIFORNIA (MILLER & MATTI, 2001), THREE DISTINCT ALLUVIAL LITHOFACIES ARE MAPPED AT THE SITE. THE NORTHEASTERN PORTION OF THE SITE IS CHARACTERIZED BY LATE HOLOCENE SAND AND GRAVEL DEPOSITS DISTINGUISHED AS UPPER TERRACE LEVEL SEDIMENTARY DEPOSITS. THE LITHOFACIES OCCURRING IN THE CENTRAL SECTION OF THE SITE, AS WELL AS THE NORTHEASTERN PORTION, IS SLIGHTLY CONSOLIDATED TO CEMENTED HOLOCENE AND LATE PLEISTOCENE SILT, SAND, AND PEBBLE DEPOSITS. IN THE SOUTHWEST CORNER OF AREA Q, LATE HOLOCENE, LOWER TERRACE DEPOSITS OCCUR THAT CONSIST OF SAND AND GRAVEL WITH SPARSE PEBBLE TO BOULDER SIZE CLASTS. THESE DEPOSITS ARE TYPICALLY THIN (< 10 FT THICK) AND LATERALLY DISCONTINUOUS DUE TO LOCALIZED EROSION AND SCOURING. REGARDING STRUCTURAL GEOLOGY, THERE ARE THREE MAJOR FAULTS NEAR THE SITE: THE GLEN HELEN FAULT STRAND OF THE SAN JACINTO FAULT, THE CUCAMONGA THRUST FAULT, AND THE SAN ANDREAS FAULT (HALEY & ALDRICH, 2022). A PORTION OF THE GLEN HELEN FAULT STRAND, (WELL) THE MOST ACTIVE FAULT OF THE SAN JACINTO FAULT, IS MAPPED AS A "CONCEALED" FAULT TRENDS THROUGH THE SOUTHWEST PORTION OF AREA Q. THIS FAULT SEGMENT IS LISTED AS A STATE OF CALIFORNIA AP EARTHQUAKE FAULT ZONE.

GENERAL NOTES:

TERMINATION DATES

MINING:	2088
RECLAMATION:	2090
MONITORING:	2093

DESIGN INFORMATION

MINING DEPTH:	240 FEET BELOW GROUND SURFACE (BGS)
SLOPES:	2H:1V (HORIZONTAL TO VERTICAL)

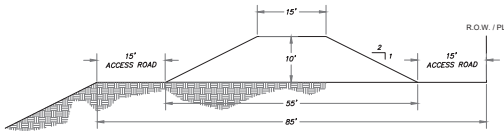
STRUCTURES

ADJACENT AREA:	NO OFF-SITE ADJACENT STRUCTURES WITHIN 200 FEET OF SITE BOUNDARIES
PROJECT AREA:	EXISTING AND PROPOSED STRUCTURES ARE IDENTIFIED ON SHEET 6, AND INCLUDE (BUT ARE NOT LIMITED TO): AGGREGATE PROCESSING PLANT, HOT MIX ASPHALT PLANT, RECYCLE PLANT, CONVEYORS, ANCILLARY SUPPORT FACILITIES. NO PERMANENT STRUCTURES PROPOSED. ALL STRUCTURES ARE TEMPORARY AND WILL BE REMOVED DURING RECLAMATION.

NO SIGNAGE PROPOSED.

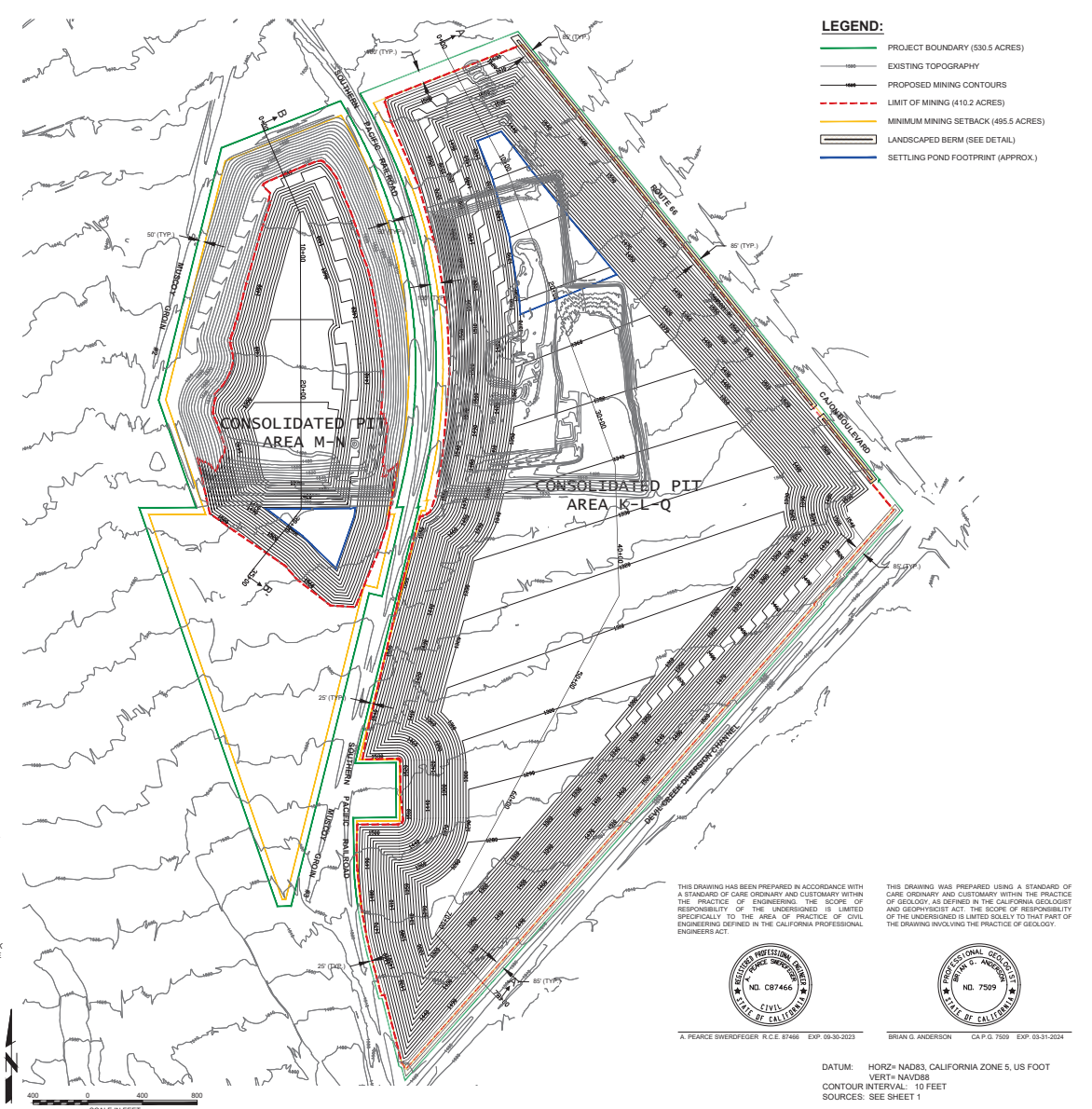
MINING NOTES:

- MINING MAY BE CONDUCTED IN MULTIPLE AREAS THROUGHOUT THE SITE AT ONE TIME TO ALLOW THE OPERATOR TO BLEND MATERIALS FROM MULTIPLE AREAS TO MEET PRODUCT SPECIFICATIONS. THEREFORE, MINING IN THE VARIOUS EXTRACTION AREAS THROUGHOUT THE SITE IS CONSIDERED A SINGLE PHASE.
- MOST OF THE TOPSOIL AND SUBSOIL HAVE ALREADY BEEN REMOVED FROM THE MINING AREAS. THIS MATERIAL WILL BE STORED IN PERIMETER BERMS IN AREA K AND Q, AS SHOWN. ANY ADDITIONAL MATERIAL RECOVERED DURING OPERATIONS WILL BE STORED FOR USE IN RECLAMATION.
- MINING SETBACKS WILL BE MAINTAINED AS SHOWN HEREON.
- THE OPERATOR WILL COMPLY WITH THE CONCLUSIONS PRESENTED BY HALEY & ALDRICH, INC. IN THE GEOTECHNICAL EVALUATION FOR VULCAN MATERIALS COMPANY CAJON CREEK CONSOLIDATION PROJECT (REPORT DATE: OCTOBER 10, 2022). FINAL PIT SLOPES SHALL BE INCLINED NO STEEPER THAN 2H:1V.
- BEST MANAGEMENT PRACTICES (BMPs) TO PREVENT EROSION, SEDIMENT, AND WIND-BOUN DUST WILL BE IMPLEMENTED AS DESCRIBED IN THE SITE-SPECIFIC STORM WATER POLLUTION PREVENTION PLAN (SWPPP).
- APPROXIMATE ANTICIPATED LOCATION OF FINES SETTLING BASINS ARE SHOWN HEREON FOR ILLUSTRATIVE PURPOSES AND ARE SUBJECT TO CHANGE IN VOLUME, LOCATION, AND FOOTPRINT BASED ON OPERATIONAL NEEDS OVER THE LIFE OF THE MINE.



BERM DETAIL

N.T.S.
DETAIL FOR PERIMETER BERM IN AREA K AND Q



LEGEND:

- PROJECT BOUNDARY (530.5 ACRES)
- EXISTING TOPOGRAPHY
- PROPOSED MINING CONTOURS
- LIMIT OF MINING (410.2 ACRES)
- MINIMUM MINING SETBACK (495.5 ACRES)
- LANDSCAPED BERM (SEE DETAIL)
- SETTLING POND FOOTPRINT (APPROX.)

THIS DRAWING HAS BEEN PREPARED IN ACCORDANCE WITH A STANDARD OF CARE ORDINARY AND CUSTOMARY WITHIN THE PRACTICE OF ENGINEERING. THE SCOPE OF RESPONSIBILITY OF THE UNDERSIGNED IS LIMITED SPECIFICALLY TO THE AREA OF PRACTICE OF CIVIL ENGINEERING DEFINED IN THE CALIFORNIA PROFESSIONAL ENGINEERS ACT.



THIS DRAWING WAS PREPARED USING A STANDARD OF CARE ORDINARY AND CUSTOMARY WITHIN THE PRACTICE OF GEOLOGY, AS DEFINED IN THE CALIFORNIA GEOLOGIST AND GEOPHYSICIST ACT. THE SCOPE OF RESPONSIBILITY OF THE UNDERSIGNED IS LIMITED SOLELY TO THAT PART OF THE DRAWING INVOLVING THE PRACTICE OF GEOLOGY.



A. PEARCE SWEEDFELDER R.C.E. 67466 EXP. 09-30-2023

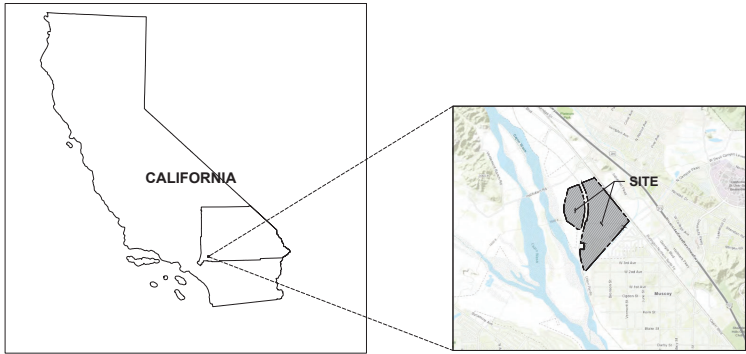
BRIAN G. ANDERSON C.A.P.G. 7509 EXP. 03-31-2024

DATUM: HORZ= NAD83, CALIFORNIA ZONE 5, US FOOT
VERT= NAVD83
CONTOUR INTERVAL: 10 FEET
SOURCES: SEE SHEET 1

OWNER / APPLICANT		REVISIONS		VULCAN MATERIALS COMPANY CAJON CREEK CONSOLIDATED QUARRY	
VULCAN MATERIALS COMPANY - WESTERN DIVISION 31 RANCHO CAMINO DRIVE, SUITE 300 POMONA, CALIFORNIA 91766		NO.	DATE	DESCRIPTION	BY
LAND USE CONSULTANT		REVISIONS		MINING PLAN	
SESPE CONSULTING, INC. 374 POLI STREET, SUITE 200 VENTURA, CALIFORNIA 93001 (805) 275-1515		NO.	DATE	DESCRIPTION	BY
FIGURE NUMBER		3			

Vulcan
Materials Company

SESPE
CONSULTING, INC.
A Trinity Consultants Company
374 Poli Street, Suite 200 • Ventura, CA 93001
(805) 275-1515 • www.sespeconsulting.com



INDEX MAP

RECLAMATION NOTES:

1. TOPSOIL AND SUBSOIL STORED IN PERIMETER BERMS OR ELSEWHERE WILL BE DECONSTRUCTED AND TOPSOIL/SUBSOIL WILL BE SPREAD THROUGHOUT THE AREA TO BE RECLAIMED TO AID IN RE-ESTABLISHMENT OF THE TOPSOIL PROFILE.
2. THE OPERATOR WILL COMPLY WITH THE CONCLUSIONS PRESENTED BY HALEY & ALDRICH, INC. IN THE GEOTECHNICAL EVALUATION FOR VULCAN MATERIALS COMPANY CAJON CREEK CONSOLIDATION PROJECT (REPORT DATE: OCTOBER 10, 2022). FINAL PIT SLOPES SHALL BE INCUTTED NO STEEPER THAN 2H:1V.
3. AT THE COMPLETION OF MINING, ALL DISTURBED AREAS AT THE SITE WILL BE REVEGETATED AS DESCRIBED IN SECTION 5.6 OF THE RECLAMATION PLAN TEXT.
4. RECLAMATION OF THE SITE WILL INCLUDE SITE CLEANUP, PUBLIC SAFETY MEASURES, DRAINAGE CONTROLS, RECONTOURING, AND RIPPING (WHERE APPLICABLE), AND REVEGETATION UTILIZING NATIVE SPECIES, MONITORING, AND MAINTENANCE.
5. THE TIMEFRAMES SHOWN IN THE "RECLAMATION TIMELINE" TABLE BELOW ARE ESTIMATIONS AND MAY CHANGE DEPENDING ON MARKET DEMANDS OR UNFORESEEN CIRCUMSTANCES.
6. ONCE MINING IS COMPLETE, ALL AREAS WILL BE RECLAIMED TO OPEN SPACE.
7. REVEGETATION ACTIVITIES WILL BE MONITORED BY A QUALIFIED REVEGETATION SPECIALIST. CHANGES TO THE REVEGETATION METHODS AND DEVELOPMENT OF POSSIBLE ALTERNATIVES TO ACHIEVE SIMILAR MINIMUM REVEGETATION STANDARDS WILL BE REVIEWED IN COORDINATION WITH SAN BERNARDINO COUNTY.
8. REVEGETATION WILL NOT PRECLUDE ACCESS TO, OR MINING OF ANY AGGREGATE RESERVES REMAINING AFTER COMPLETION OF THE PROPOSED MINING ACTIVITIES.
9. OFFICIALS OF VULCAN MATERIALS COMPANY WILL BE RESPONSIBLE FOR ACCOMPLISHING THE MAINTENANCE AND MONITORING PROGRAM IN COORDINATION WITH THE SAN BERNARDINO PLANNING DEPARTMENT.
10. DURING RECLAMATION, WATER IN THE SETTLING PONDS WILL BE ALLOWED TO NATURALLY INFILTRATE AND/OR EVAPORATE. SETTLING PONDS WILL THEN BE REVEGETATED IN THE SAME MANNER AS THE REMAINDER OF THE SITE.
11. NOMINAL VOLUMES OF CLEAN, INERT FILL FROM ON-SITE OPERATIONS OR IMPORT WILL BE PLACED IN THE FINISHED EXCAVATION PITS PRIOR TO REVEGETATION, CONSISTENT WITH THE EXISTING SPECIFIC PLANNING APPROVALS.

REVEGETATION SEED MIX:

COMMON NAME	SCIENTIFIC NAME	SEEDING RATE (LBS./ACRE) ¹	
		MINIMUM	MAXIMUM
CALIFORNIA SAGEBRUSH	ARTEMISIA CALIFORNICA	1.0	2.0
CHAMISE	ADENOSTOMA FASCICULATUM	2.0	4.0
FLATTOPPED BUCKWHEAT	ERIOGONUM FASCICULATUM	8.0	12.0
SCALEBROOM	LEPIDOSPARTUM SQUAMATUM	3.0	5.0
BLACK SAGE	SALVIA MELIFERA	1.0	2.0
GOLDEN ASTER	CHRYSOPLIS VILLOSA	0.25	0.5
SLENDER BUCKWHEAT	ERIOGONUM GRACILE (E. DAVIDSONII)	1.0	2.0
CALIFORNIA CROTON	CROTON CALIFORNICUS	0.25	0.5
MOUNTAIN MAHOGANY	CEROCARPUS BETULOIDES	0.5	1.5
CALIFORNIA EVERLASTING	GNAPHALUM CALIFORNICUM	0.5	1.0
SHOWY PENSTEMON	PENSTEMON SPECTABILIS	0.5	1.5
DEERWEED	LOTUS SCOPARIUS	4.0	8.0
CHIA	SALVIA COLUMBARIAE	0.5	2.0
WHITE SAGE	SALVIA APIANA	1.0	2.0
BRANCHING PHACELIA	PHACELIA RAMOSISSIMA	0.25	1.0
RED BERRY	RHAMNUS CROCEA	1.0	2.0
BUTTERWEED	SENECIO DOUGLASII	0.25	0.5
GIANT STIPA	STIPA CORONATA	1.0	2.0
CHAPARRAL YUCCA	YUCCA WHIPPLEI	1.0	2.0
TOTAL:		27.0	51.5

¹ RANGE SHOWN REPRESENTS MINIMUM AND MAXIMUM SEEDING RATE (LBS./ACRE) THAT SHOULD BE UTILIZED DURING HYDROSEEDING.

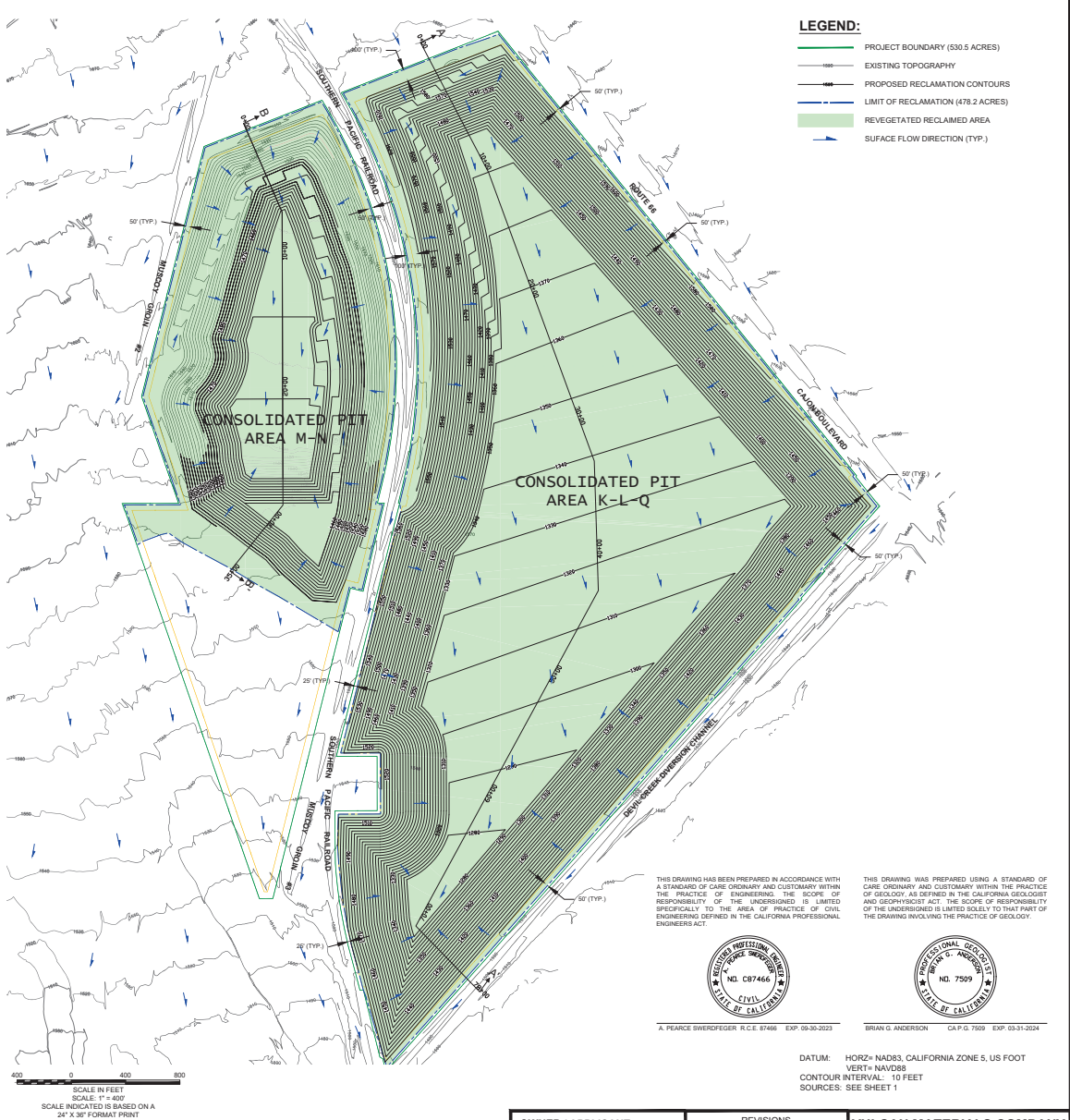
FIVE-YEAR PERFORMANCE STANDARDS FOR REVEGETATION:

PERFORMANCE CRITERIA	MONITORING METHOD	SUCCESS CRITERIA (5-YEAR) ¹	MANAGEMENT RESPONSE
VEGETATIVE COVER	TRANSECT/PLOT OR AERIAL PHOTO ANALYSIS	25% COVER ALL NATIVE PERENNIALS COMBINED PER 50-METER BY 1-METER TRANSECT	RESEED AND/OR IDENTIFY AND REPAIR INFLUENCING VARIABLE
DENSITY	TRANSECT/PLOT	5 NATIVE PERENNIAL SPECIES PER 50-METER BY 1-METER TRANSECT	SUBSTITUTE FAILING SPECIES WITH PLANTED SPECIES THAT IS THRIVING
SPECIES RICHNESS	TRANSECT/PLOT	20 NATIVE PERENNIALS PER 50-METER BY 1-METER TRANSECT	RESEED AND/OR IDENTIFY AND REPAIR INFLUENCING VARIABLE

¹ WITHIN THE RECLAMATION AREA, SIX (6) RANDOMLY PLACED 50-METER BY 1-METER TRANSECTS WILL BE UTILIZED TO DETERMINE THE SUCCESS OF REVEGETATION EFFORTS AT PROJECT SITE. DATA FOR ALL TRANSECTS WILL BE AVERAGED TO PRODUCE THE FINAL SUCCESS CRITERIA RESULTS.

RECLAMATION TIMELINE:

ACTIVITY	APPROXIMATE SIZE (ACRES)	SCHEDULE		LAND USE / END USE
		START	END	
SITE PREPARATION	478.2	ONGOING	MARCH 2023	CLEARED SITE
MINING	410.2	ONGOING	DECEMBER 2093	EXCAVATED PIT
RECLAMATION	478.2	JANUARY 2094	DECEMBER 2095	OPEN SPACE
RECLAMATION MONITORING	478.2	JANUARY 2096	DECEMBER 2098	REVEGETATED OPEN SPACE



A. PEARCE SWEEDFEEGER R.C.E. 67466 EXP. 09-30-2023

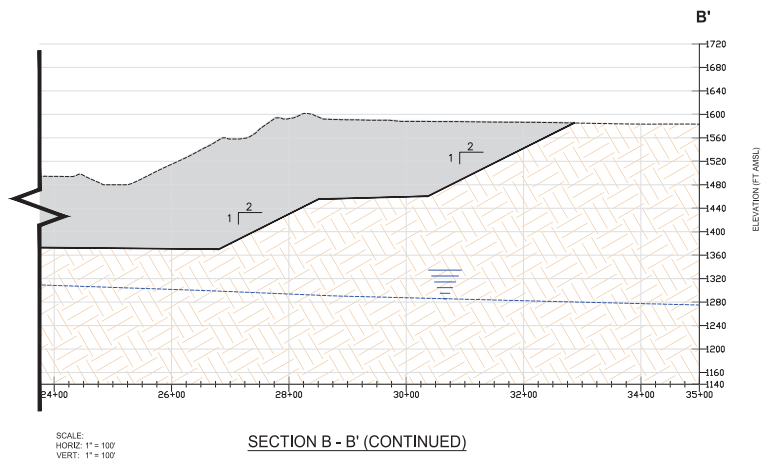
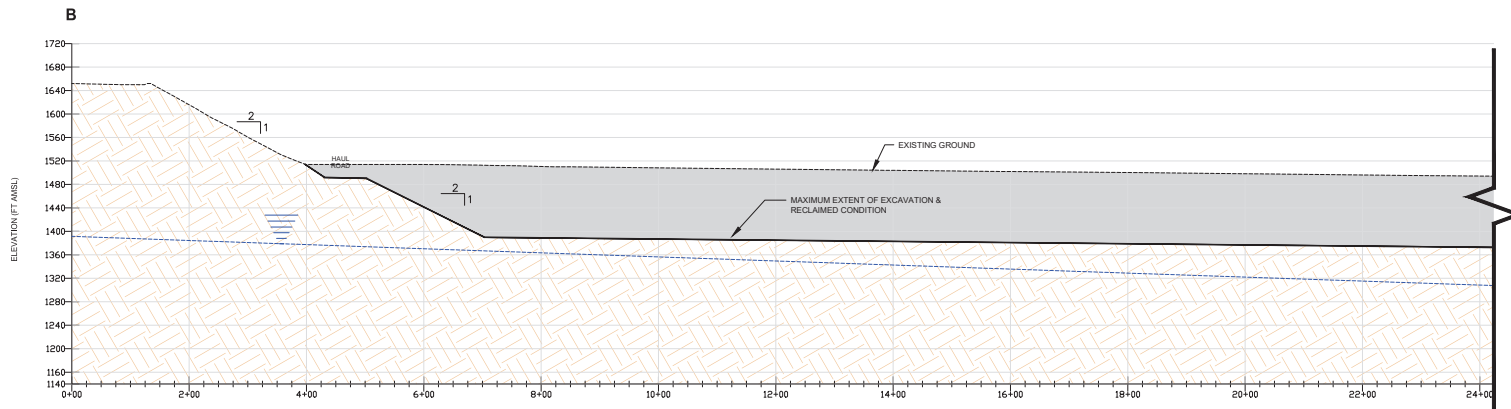
BRIAN G. ANDERSON C.E.P. 73509 EXP. 03-31-2024

DATUM: HORZ: NAD83, CALIFORNIA ZONE 5, US FOOT
VERT: NAVD83
CONTOUR INTERVAL: 10 FEET
SOURCES: SEE SHEET 1

OWNER / APPLICANT		REVISIONS		VULCAN MATERIALS COMPANY CAJON CREEK CONSOLIDATED QUARRY
VULCAN MATERIALS COMPANY - WESTERN DIVISION 31 RANCHO CAMINO DRIVE, SUITE 300 POMONA, CALIFORNIA 91766		DATE	DESCRIPTION	
LAND USE CONSULTANT SESPE CONSULTING, INC. 374 POLI STREET, SUITE 200 VENTURA, CALIFORNIA 93001 (805) 275-1515		DATE	DESCRIPTION	RECLAMATION PLAN FIGURE NUMBER 4
		DATE	DESCRIPTION	

Vulcan
Materials Company

SESPE
CONSULTING, INC.
A Trinity Consultants Company
374 Poli Street, Suite 200 • Ventura, CA 93001
(805) 275-1515 • www.sespeconsulting.com



NOTES:

1. APPROXIMATE GROUNDWATER ELEVATION SHOWN ON THE SECTIONS HEREON DERIVED BY FROM INFORMATION PROVIDED IN HYDROGEOLOGIC INVESTIGATION, CAJON CREEK CONSOLIDATED QUARRY PROJECT (REPORT DATE: SEPTEMBER 2, 2021).

THIS DRAWING HAS BEEN PREPARED IN ACCORDANCE WITH A STANDARD OF CARE ORDINARY AND CUSTOMARY WITHIN THE PRACTICE OF ENGINEERING. THE SCOPE OF RESPONSIBILITY OF THE UNDERSIGNED IS LIMITED SPECIFICALLY TO THE AREA OF PRACTICE OF CIVIL ENGINEERING DEFINED IN THE CALIFORNIA PROFESSIONAL ENGINEERS ACT.



A. PEARCE SWERDLEGER R.C.E. 87466 EXP. 09-30-2023

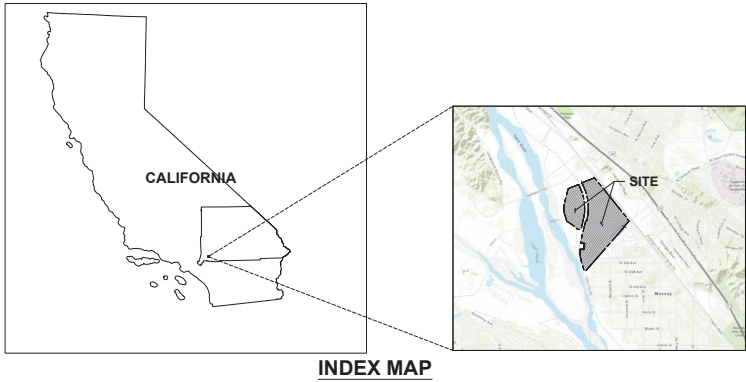
THIS DRAWING WAS PREPARED USING A STANDARD OF CARE ORDINARY AND CUSTOMARY WITHIN THE PRACTICE OF GEOLOGY AS DEFINED IN THE CALIFORNIA GEOLOGIST AND GEOPHYSICIST ACT. THE SCOPE OF RESPONSIBILITY OF THE UNDERSIGNED IS LIMITED SOLELY TO THAT PART OF THE DRAWING INVOLVING THE PRACTICE OF GEOLOGY.



BRIAN G. ANDERSON CAP.G. 7509 EXP. 03-31-2024

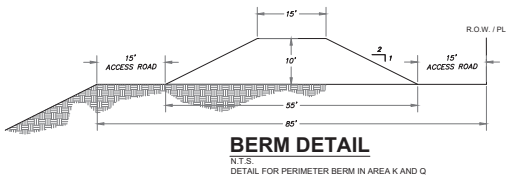
OWNER / APPLICANT VULCAN MATERIALS COMPANY - WESTERN DIVISION 31 RANCHO CAMINO DRIVE, SUITE 300 POMONA, CALIFORNIA 91768		REVISIONS <table border="1"> <thead> <tr> <th>DATE</th> <th>BY</th> <th>DESCRIPTION</th> <th>REV.</th> </tr> </thead> <tbody> <tr> <td>08/01/2021</td> <td>INITIAL DRAFT</td> <td></td> <td>0.1</td> </tr> <tr> <td></td> <td></td> <td></td> <td></td> </tr> <tr> <td></td> <td></td> <td></td> <td></td> </tr> <tr> <td></td> <td></td> <td></td> <td></td> </tr> <tr> <td></td> <td></td> <td></td> <td></td> </tr> </tbody> </table>		DATE	BY	DESCRIPTION	REV.	08/01/2021	INITIAL DRAFT		0.1																	VULCAN MATERIALS COMPANY CAJON CREEK CONSOLIDATED QUARRY	
DATE	BY	DESCRIPTION	REV.																										
08/01/2021	INITIAL DRAFT		0.1																										
LAND USE CONSULTANT SESPE CONSULTING, INC. 374 POLI STREET, SUITE 200 VENTURA, CALIFORNIA 93001 (805) 275-1515 • www.sespeconsulting.com		DESIGNED BY: _____ CHECKED BY: _____ DATE: _____ SCALE: _____		CROSS-SECTION B - B' FIGURE NUMBER 6																									



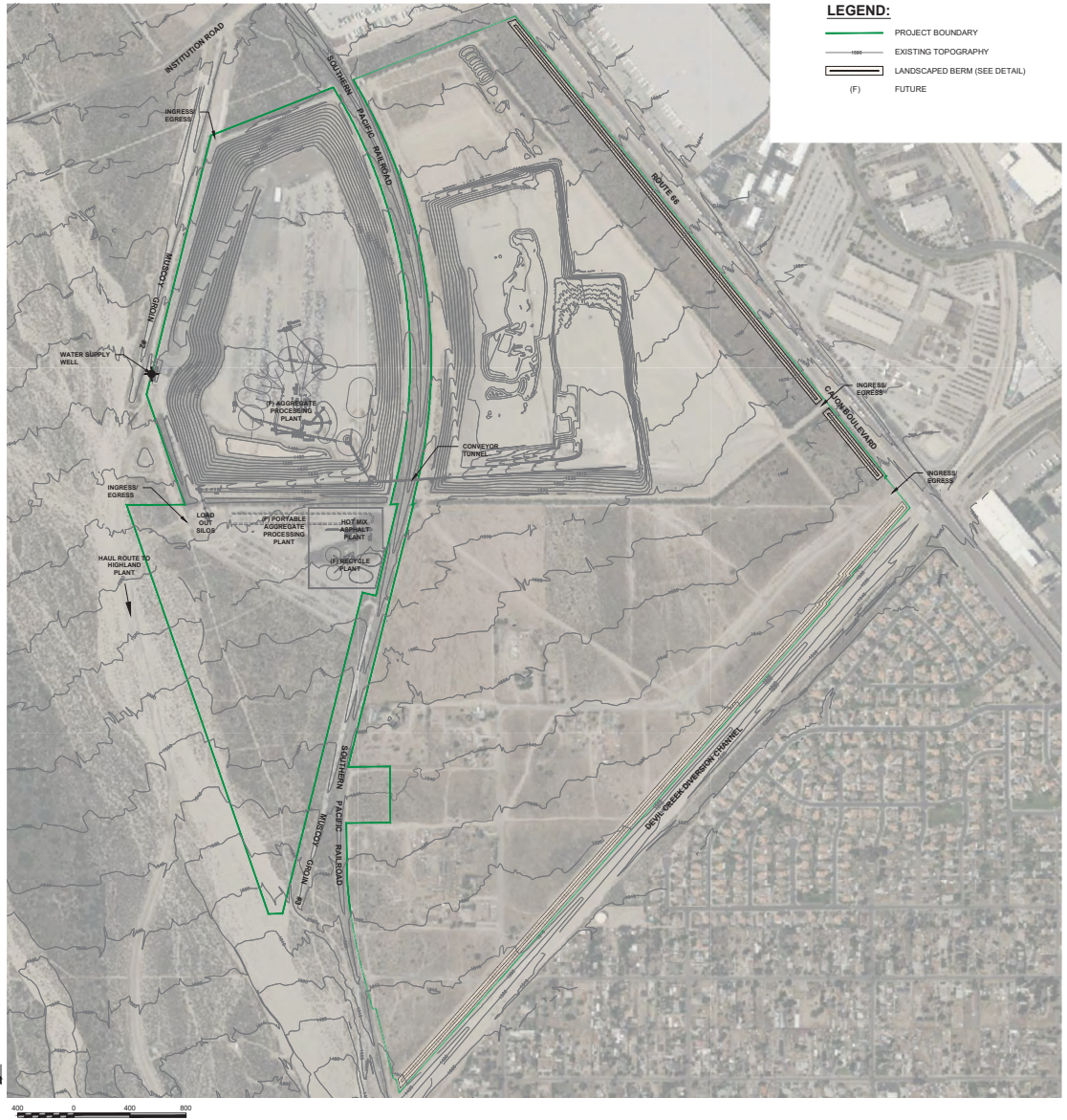


NOTES:

1. PROPOSED STRUCTURES ARE SHOWN FOR PERMITTING PURPOSES ONLY. STRUCTURE LAYOUT, DESIGN, LOCATION, ETC. ARE SUBJECT TO CHANGE DURING OPERATIONS.
2. CURRENTLY, MATERIAL PROCESSING TAKES PLACE OFF-SITE, AT VULCAN'S ADJACENT HIGHLAND PLANT (LOCATED APPROXIMATELY 3 MILES SOUTH OF THE CAJON CREEK CONSOLIDATED QUARRY). MINED MATERIAL IS CONVEYED TO LOADOUT SILOS ON THE WEST SIDE OF AREA N, WHICH LOAD ON-ROAD HAUL TRUCKS TO TRANSPORT THE MATERIAL. ONCE THE APPROVED PROCESSING FACILITIES ARE CONSTRUCTED WITHIN AREA M OF THE CAJON CREEK CONSOLIDATED QUARRY, AGGREGATE WILL BE PROCESSED ON-SITE.
3. THE AREA M AGGREGATE PROCESSING PLANT AND FUTURE RECYCLING PLANT ARE PERMITTED UNDER CONDITIONAL USE PERMIT (CUP) 91-31, SPECIFIC PLAN SP NO. 90-01, AND DEVELOPMENT PERMIT 97-24. THE EXACT LOCATION OF THE RECYCLE PLANT WITHIN AREA M OR L HAS NOT BEEN DETERMINED AT THIS TIME, AND IS THEREFORE NOT SHOWN ON THE SITE PLAN.
4. AT THE CESSATION OF MINING IN AREAS K, L, AND Q, A PORTABLE PROCESSING PLANT WILL BE INSTALLED IN THE AREA N PIT SO THAT THE MATERIAL FROM BENEATH THE CURRENT PROCESSING PLANT(S) IN AREA M CAN BE EXTRACTED AND PROCESSED.
5. AREA N HOT MIX ASPHALT PLANT PERMITTED UNDER DEVELOPMENT PERMIT MM 22-08.



DATUM: HORIZ= NAD83, CALIFORNIA ZONE 5, US FOOT
VERT= NAVD83
CONTOUR INTERVAL: 10 FEET
SOURCES: SEE SHEET 1



Vulcan
Materials Company

SESPE
CONSULTING, INC.
A Trinity Consultants Company
374 Pol Street, Suite 200 • Ventura, CA 93001
(805) 275-1515 • www.sespeconsulting.com

OWNER / APPLICANT
VULCAN MATERIALS COMPANY -
WESTERN DIVISION
31 RANCHO CAMINO DRIVE, SUITE 300
POMONA, CALIFORNIA 91768
LAND USE CONSULTANT
SESPE CONSULTING, INC.
374 POL STREET, SUITE 200
VENTURA, CALIFORNIA 93001
(805) 275-1515

REVISIONS			
NO.	DATE	DESCRIPTION	BY

VULCAN MATERIALS COMPANY CAJON CREEK CONSOLIDATED QUARRY	
SITE LAYOUT PLAN	
FIGURE NUMBER	7